



international students

We welcome foreign students from other countries into our university community. We value the knowledge and experience they bring which greatly enrich our local students. We know that in many cases moving to another country to attend school requires a great deal of personal and family commitment. Therefore, it is important for international students to comply with all admission and immigration requirements prior to enrolling in classes.

international students must comply with the following:

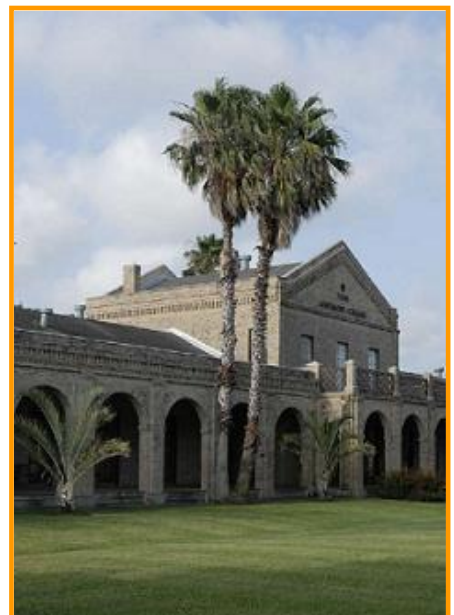
Steps for Admission:

1. Apply for admissions in Tandy 115 or via the website. ([Click here](#))
2. Submit transcripts from previously attended colleges, universities or high schools in English to the Admissions Office. For more information, contact Larissa Guijosa at larissa.newstudents@utb.edu (956) 882-8860 or visit the Admissions Office in Tandy 115, or call (956) 882-8295.
3. Students are required to take the TOEFL exam. Please visit www.toefl.org for more information, test dates, cites and to register for it.

TOEFL Scores.

Internet base test 61 (available at UTB)
Paper base test 500
Computer base test 173

4. Students must take the THEA or a state-approved exam prior to enrollment. In order to be exempt from the THEA exam, a student may take the Compass, the SAT exam (score a 1070 with a minimum of 500 on each of the verbal and math sections) or the ACT exam (with a 23 minimum of 19 in each section). For more information please contact Larissa Guijosa (larissa.newstudents@utb.edu).





5. To obtain information on degree plans and programs of study, please contact Aracely Alvarez (aracely.alvarez@utb.edu) with Academic Advising.
6. Obtain a valid passport with a validity of at least 5 years and send a copy to the Office of Admissions.
7. Complete and notarize the “Affidavit of Financial Support” ([Download](#)) form. For more information contact admissions@utb.edu (956) 882-8295 (Tandy Building, Office 115).
8. Provide an original bank statement or an original signed letter with the bank’s letterhead indicating the minimum financial funds available (statement should not be older than 90 days as of the first class day).

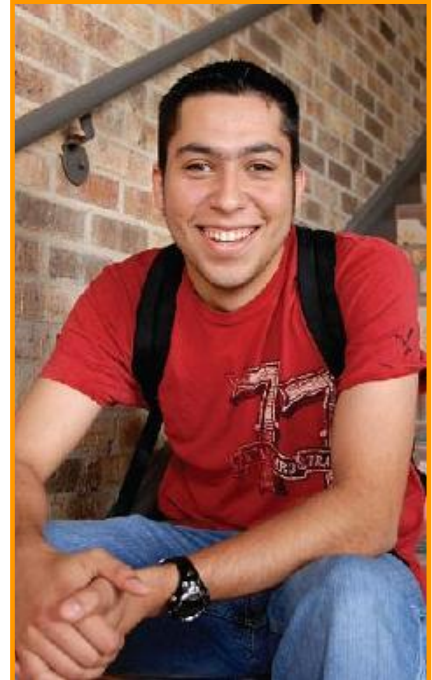
Required Financial Resources: (the following are estimated costs for two semesters or one year financial requirement)

The approximate cost for 12 credit hours (4 courses)
is \$5,000.00 dollars (one semester)

Tuition:	\$11,000
Books/supplies:	\$400
Health Insurance:	\$600
Student Housing:	\$3,000
	http://www.sa.utb.edu/housing/ (see details for reservation)
Living Expenses:	\$2,000

Total: \$17,000

9. Send all documents to Admissions Office, Tandy #115, 80 Fort Brown, Brownsville, Texas 78520
 - Degree plan (program of study)
 - Valid Passport (copy)
 - Affidavit of Financial Support (Original)
 - Financial Resources





athletes

If student does not qualify for a full paid scholarship, the student is responsible for the tuition difference.

Ex: Total of Tuition: \$17,000
Total of Scholarship: \$15,000
Student responsible: \$2,000

It's recommended for students under a full scholarship to bring \$ 1,000 dollars for personal expenses.

- 10.** Once steps 1-10 have been met, an I-20 Form will be issued as well as a letter of completion with ID # and PIN.
- A physical address is required in order to mail the I-20 form.
Note: It cannot be sent to a P.O. BOX.
 - Must pay I-20 Sevis Fee \$200 U.S. dollars with a credit card. Please visit www.fmjfee.com to make payment and further details.

Additional Procedures

- ✓ Make appointment with the American Embassy/Consulate after obtaining the I-20 (Letter of Eligibility). Please Visit the following website for details and requirements: <http://travel.state.gov/>
- ✓ Present passport with F-1 or M-1 Visa and I-20 form at the Port of Entry of the United States; a processing fee of \$6.00 U.S. dollars will apply.
- ✓ Present passport with all the immigration documentation upon arrival to the Admissions of Office – Tandy Building #115. Copies of these documents will be made and records will be updated on SEVIS (Homeland Security). Present results of THEA or alternative tests.
- ✓ Register for UTB/TSC freshman Orientation <http://blue.utb.edu/sa/orientation/>
- ✓ Attend a Mandatory Session for International Students. For more information, contact Aragelia Salazar: 956-882-7983 or Aragelia.Salazar@utb.edu / Old Education building, Office #22, or see Letter of completion issued by the Admissions Office.
- ✓ Pay for classes and health insurance at the Business Office Tandy #107. Please consult the deadlines, Tuition and Fees section of the Student's Course Schedule <http://pubs.utb.edu/course-schedule/>
- ✓ Obtain student school Identification card with statement of charges (receipt for payment of classes) at the Library.

contacts:

Academic Advising

(956) 882-7514

Aracely Alvarez:
Academic Advisor
Aracely.Alvarez@utb.edu

International/Multicultural Student Services

(956) 882-7983

Aragelia Salazar:
Student Development Specialist
Aragelia.Salazar@utb.edu

New Student Relations

(956) 882-8860

Larissa Guijosa:
Student Development Specialist
larissa.newstudents@utb.edu

Hector Gonzalez:
Student Development Specialist
hector.newstudents@utb.edu

Office of Admissions

(956) 882-8295

Graciela Moreno:
International Specialist.
gracie.admissions@utb.edu
gracie.moreno@utb.edu

Jessica J. Cantu:
International Specialist.
jessica.admissions@utb.edu
jessica.cantu1@utb.edu

Julio Ibarra:
International Specialist.
julio.admissions@utb.edu
julio.ibarra@utb.edu

important links:

- UTB Calendar.
(Find deadlines and important dates)
http://www.utb.edu/vpia/publications/Pages/current_calendars.aspx
- UTB/TSC Programs of study.
http://blue.utb.edu/vpaa/ucatalog/07_002.htm
- UTB/TSC College & Schools
http://pubs.utb.edu/provost/ac_departments.htm
- Student's Course Schedule
<http://pubs.utb.edu/course-schedule/>
- US Embassies in Mexico
<http://www.usembassy-mexico.gov>
- The TOEFL Exam
(Test of English as a foreign Language.)
www.ets.org/toefl/
- Things to Know About COMPASS.
(Sample question and more)
<http://www.act.org/compass/student/index.html>
- Other near airports:
Harlingen, Texas (20 miles)
McAllen, Texas (50 miles)
Houston, Texas (400 miles)
- Brownsville, Texas.
<http://www.ci.brownsville.tx.us/>

